

## CJ Littlejohns Medical Prize 2014 Assessment Panel

Deborah Lloyd

Chair of the Board of Governors Gowerton School

Professor David Haslam CBE



Professor David Haslam was a GP in Ramsey, Cambridgeshire for many years. He is chairman of the National Institute for Health and Care Excellence. Previously he has been president of the British Medical Association (2011-12), President (2006-9) and chairman (2001-4) of the Royal College of General Practitioners (RCGP), and vice chairman of the Academy of Medical Royal Colleges. He is a visiting Professor in Primary Health Care at De Montfort University in Leicester. He is also a member of the National Quality Board and Chair of the NQB Quality Information Committee. He was formerly National Professional Advisor to the Care Quality Commission, and was chair of the NICE Evidence Accreditation Advisory Committee. Professor Haslam chaired the Modernising Medical Careers Programme Board from 2007-9. He was co-chair of the NHS Future Forum Information subgroup, a member of the Postgraduate Medical Education Training Board, a member of NHS MEE, co-chair of the MMC Programme Board from 2006-9 and a board member of the Postgraduate Medical Education Training Board. David is a Fellow of the RCGP, the Faculty of Public Health, the Academy of Medical Educators and the Royal College of Physicians. He has written 13 books, mainly on health topics for the lay public and translated into 13 languages, and well over a thousand articles for the medical and lay press. He was awarded the CBE in 2004 for services to Medicine and Health Care.

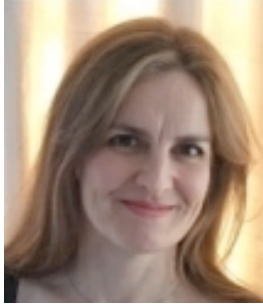
Professor Ian Kennedy



Professor Sir Ian Kennedy is a British academic lawyer who has specialised in the law and ethics of health. He was appointed to chair the Independent Parliamentary Standards Authority in 2009. Sir Ian was Dean of the Law School at King's College London from 1986 to 1996. He was BBC Reith Lecturer on the subject of "Unmasking Medicine" in 1980. For nine years, he was a member of the General Medical Council. In 1978, he founded the Centre of Medical Laws and Ethics, of which he later became president. He was a member of the Nuffield Council for Bioethics 1991-2002 and Chair during 1998-2002. He chaired the public inquiry into children's heart surgery at the Bristol Royal Infirmary (1998-2001), which concluded that paediatric cardiac surgery services at Bristol were "simply not up to the task", because of shortages of key

surgeons and nurses, and a lack of leadership, accountability, and teamwork. This resulted in his becoming chair of the Health Care Commission

#### Dr Ingrid Wolfe



Dr Ingrid Wolfe is a children's doctor qualified in both paediatrics and public health. She is a Public Health Consultant at Guy's and St Thomas's NHS Trust, and a practicing general paediatrician at Whittington Hospital. She is Consultant in Child Health Research to the European Paediatric Association. She has published papers and book chapters examining children's health services, public health, and health policy in the UK compared with Europe. Her work includes quantitative assessments of healthcare amenable child mortality, comparative data between countries, analyses of possible reasons why similar countries have different child health outcomes, and policy recommendations for improvement.

#### Professor Albert Weale CBE



Professor Albert Weale was born in Brighton in 1950, and was educated at St Luke's Primary School and Varndean Grammar School for Boys. In 1967 he won a place at Clare College Cambridge, where he read Theology. Between leaving school in December 1967 and going to Clare in October 1968, he was a volunteer with Community Service Volunteers at a youth centre in Amesbury, Wiltshire. After graduating in Theology in 1971, his original intention had been to write a thesis on the philosophical theology of Paul Tillich, a figure in whom he still retains an interest, but he became absorbed by questions in political philosophy and the philosophy of the social sciences. In 1974 he was awarded the Sir James Knott Fellowship in the Department of Politics at the University of Newcastle. In 1976 he was awarded a Lectureship in the Department of Politics at the University of York. In 1985 he moved to the University of East Anglia as Professor of Politics and in 1992 he moved to the Department of Government at the University of Essex as Professor of Government. In January 2010 he became Professor of Political Theory and Public Policy at UCL. His main intellectual influences have been the work of John Rawls and H.L.A. Hart in contemporary political theory, and John Stuart Mill and Henry Sidgwick in the history of political thought.

## Professor Peter Littlejohns



Peter is Professor of Public Health at King's College London. Between 1999 and 2012 he was the founding Clinical and Public Health Director of the National Institute for Health and Clinical Excellence (NICE) in the UK. He is a Fellow of the Royal College of Physicians, Fellow of the Faculty of Public Health and Fellow of the Royal College of General Practitioners. His research interests are aimed at improving the cost-effectiveness of health care and he is currently leading an international research programme addressing the role of "values" in the fair allocation of health care resource. In 1998 he spent a year in South Africa undertaking research into health policy funded by the Health Systems research Trust.

## Samuel Littlejohns



Sam is a trainee barrister, and Lord Denning Scholar at Lincoln's Inn. He consults on a range of projects to improve access to law and the rule of law in developing and post-conflict countries, and provides research support to the UN Special Rapporteur for Trafficking in Persons. He has previously advised health charities and pharmaceuticals companies on how to engage with the NHS and Department of Health. In his free time, he is more often than not found trying to spot an excuse to get out on a bicycle, and also has a habit of advising students who wish to embark on over-ambitious international volunteering projects.

## Anna Littlejohns



Is a first year Medical Student at the University of Leeds

Professor Steve Pearson



Dr. Pearson is the Founder and President of the ITA's Institute for Clinical and Economic Review (ICER). His team that brings together stakeholders to evaluate the comparative effectiveness of medical interventions, and to translate comparative effectiveness information into formats that can help patients, clinicians, and policy makers make better use of evidence throughout the health care system. Their ultimate goal is to inform health care policy and spur innovation in the use of evidence to improve the value of health care for all. Dr. Pearson is a Lecturer in the Department of Population Medicine at Harvard Medical School and also serves as Visiting Scientist in the Department of Bioethics at the National Institutes of Health. He attended UCSF School of Medicine, completed his residency in internal medicine at Brigham and Women's Hospital, and obtained a Master of Science Degree in Health Policy and Management at the Harvard School of Public Health. He has served in many advisory and leadership roles in academia and government. From 2005-2006 he was Special Advisor, Technology and Coverage Policy, within the Coverage and Analysis Group at the Centers for Medicare and Medicaid Services. He has also served as Senior Fellow at America's Health Insurance Plans, and as the Vice Chair of the Medicare Evidence Development and Coverage Advisory Committee (MedCAC) from 2007-2009. Dr. Pearson continues to be active in various roles related to comparative effectiveness research and policy, including the Board of Directors of Health Technology Assessment International (HTAi), the AcademyHealth Methods Council, the Quality Alliance Steering Committee, and the National Institutes of Health Comparative Effectiveness Research Steering Committee. Dr. Pearson's ongoing academic work combines efforts in data aggregation and performance measurement, health services research, technology assessment, and bioethics. His published work includes numerous articles and commentaries on the role of evidence in the health care system, and the book *No Margin, No Mission: Health Care Organizations and the Quest for Ethical Excellence*, published by Oxford University Press.